

Installation Mysql + Dbeaver

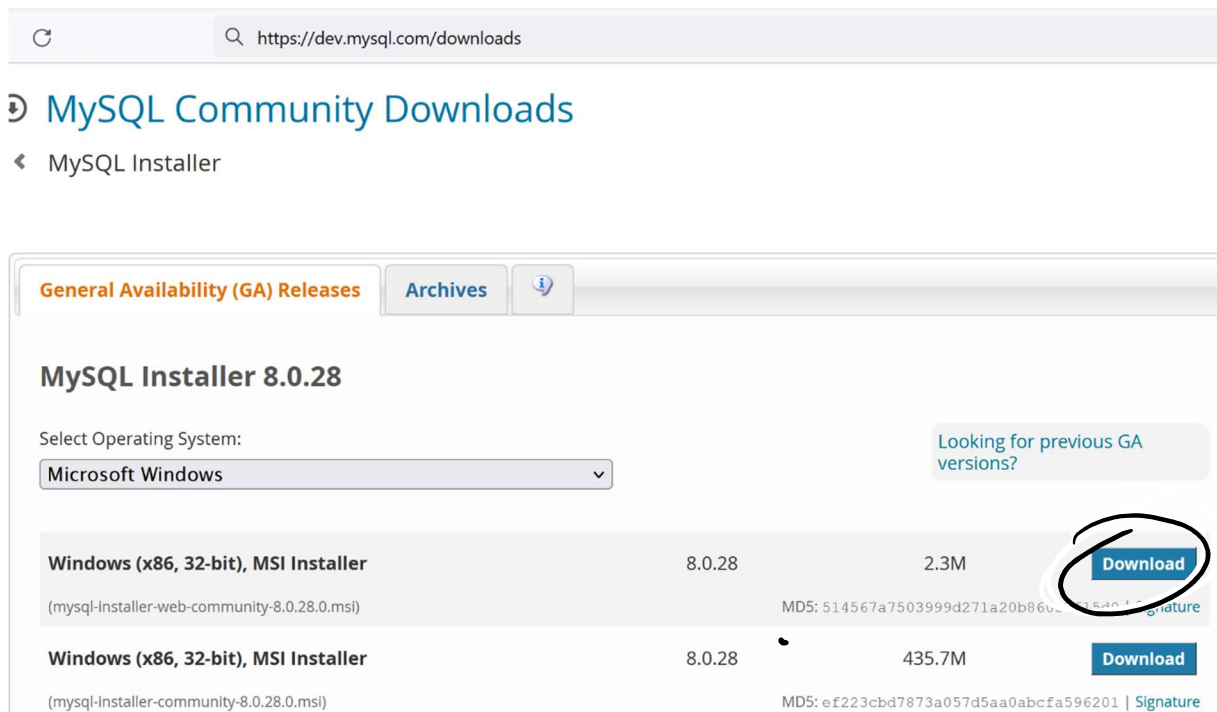
Pour l'administration des bases de données Mysql vous pouvez utiliser soit Mysql WorkBench soit Dbeaver dont l'installation est décrite dans la deuxième section de ce document.

1- Installation Mysql

Télécharger le programme d'installation mysql :

[MySQL :: Download MySQL Installer](https://dev.mysql.com/downloads/mysql/8.0.html)

(<https://dev.mysql.com/downloads/windows/installer/8.0.html>)



The screenshot shows a web browser window with the URL <https://dev.mysql.com/downloads>. The page title is "MySQL Community Downloads" and the breadcrumb is "MySQL Installer". The main content area is titled "MySQL Installer 8.0.28" and features a "General Availability (GA) Releases" tab. A dropdown menu for "Select Operating System:" is set to "Microsoft Windows". A button labeled "Looking for previous GA versions?" is visible. Below, a table lists two download options for Windows (x86, 32-bit), MSI Installer. The first option is 2.3M and has a "Download" button circled in red. The second option is 435.7M and also has a "Download" button. MD5 hashes and signature links are provided for both.

Operating System	Version	Size	Action
Windows (x86, 32-bit), MSI Installer (mysql-installer-web-community-8.0.28.0.msi)	8.0.28	2.3M	Download
Windows (x86, 32-bit), MSI Installer (mysql-installer-community-8.0.28.0.msi)	8.0.28	435.7M	Download

MySQL Community Downloads

Login Now or Sign Up for a free account.

An Oracle Web Account provides you with the following advantages:

- Fast access to MySQL software downloads
- Download technical White Papers and Presentations
- Post messages in the MySQL Discussion Forums
- Report and track bugs in the MySQL bug system

Login »

using my Oracle Web account

Sign Up »

for an Oracle Web account

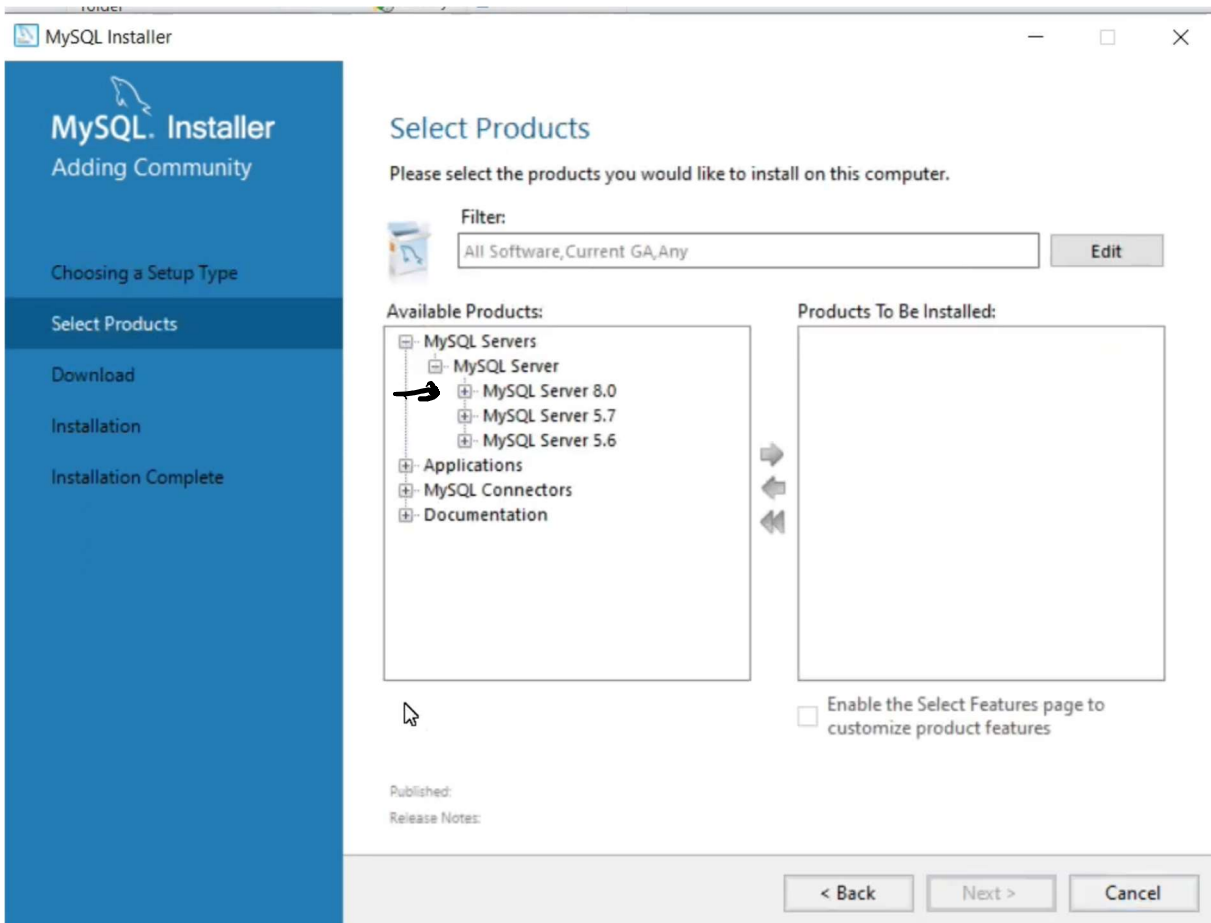
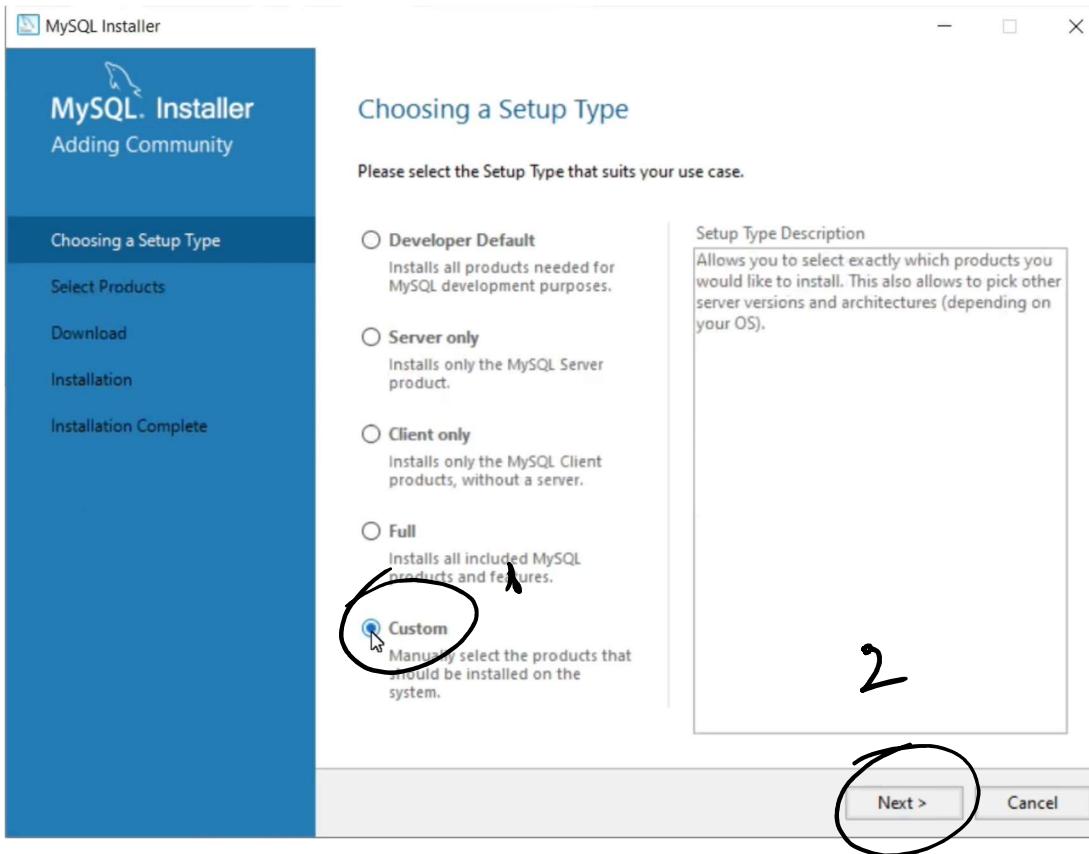
MySQL.com is using Oracle SSO for authentication. If you already have an Oracle Web account, click the Login link. Otherwise, you can sign up for a free account by clicking the Sign Up link and following the instructions.

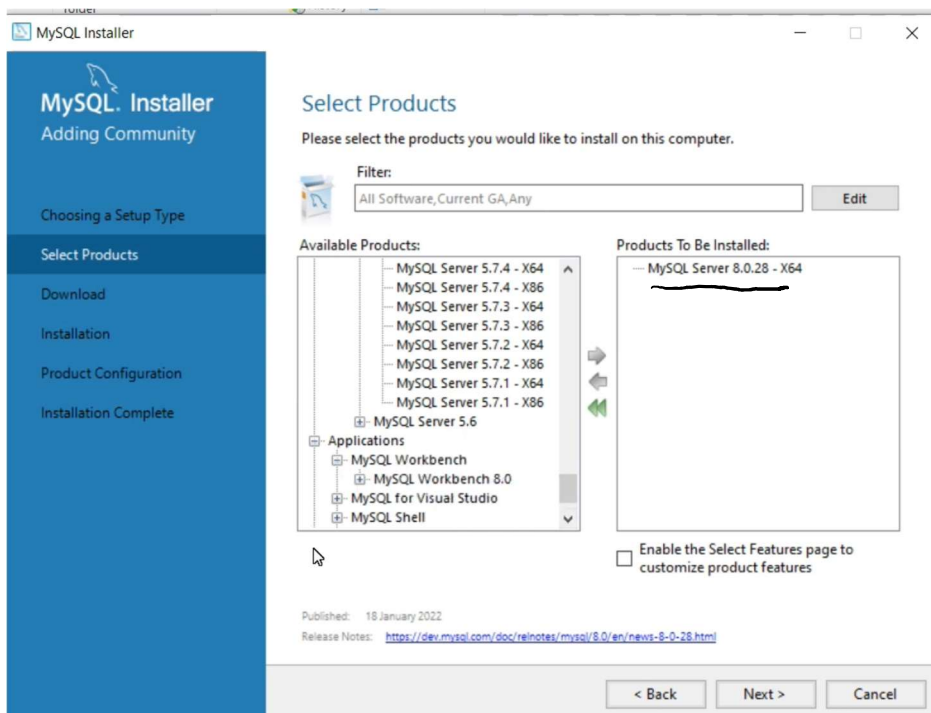
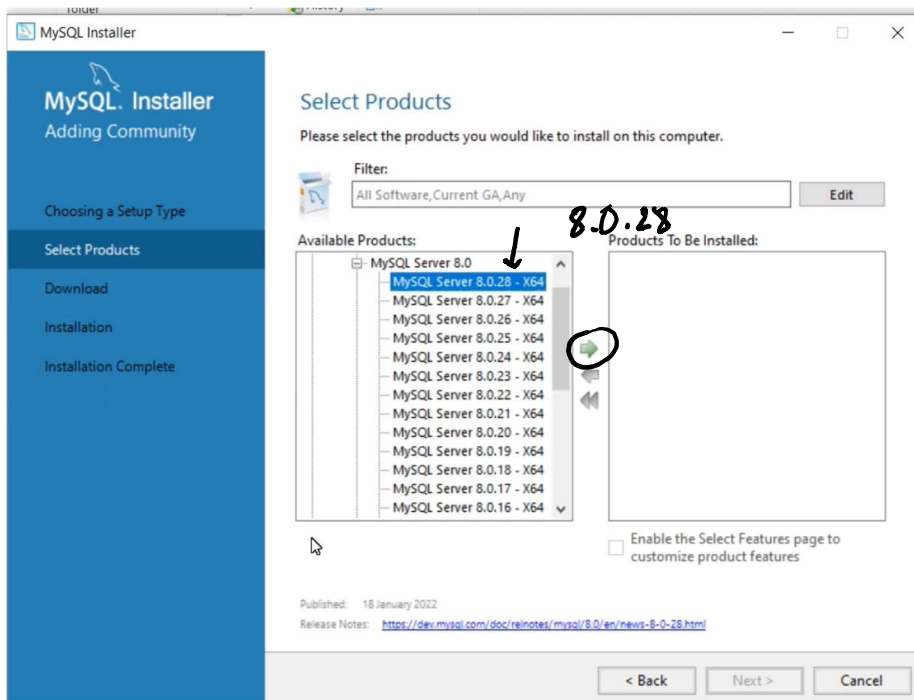
No thanks, just start my download.

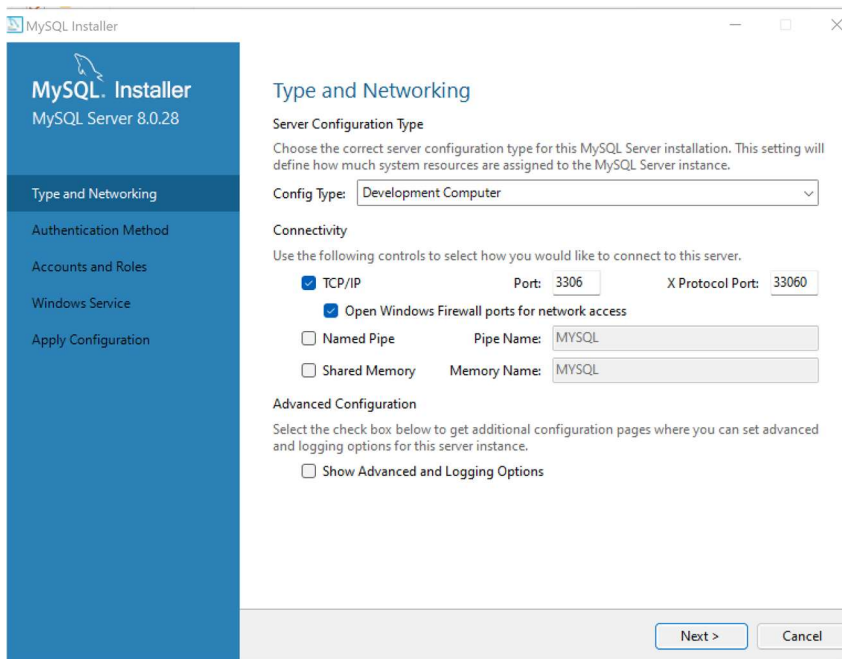
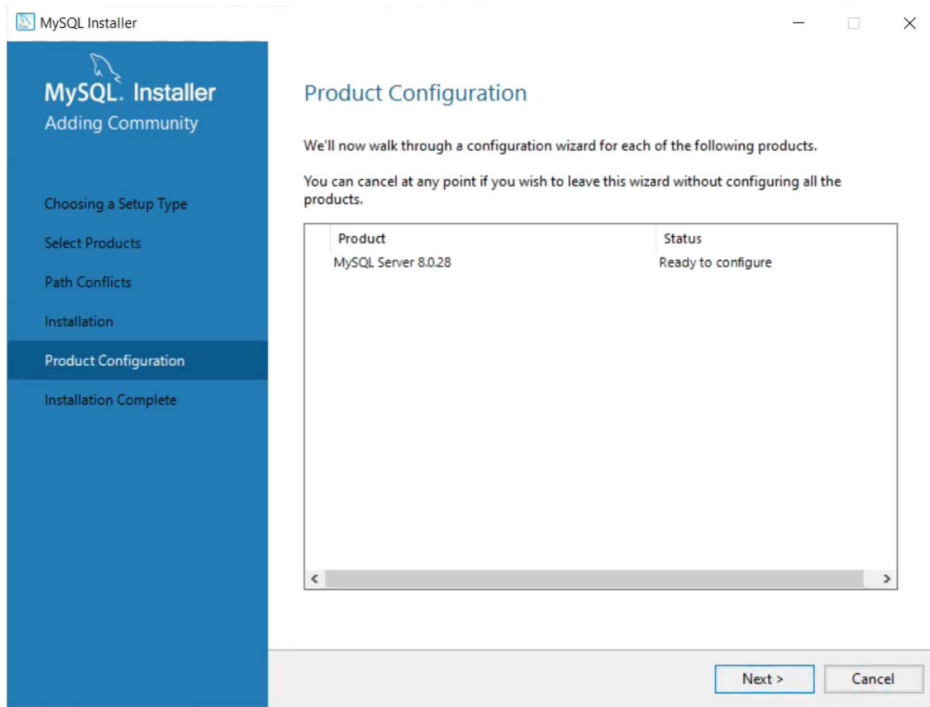
ORACLE

© 2022, Oracle Corporation and/or its affiliates

Lancer le programme d'installation







MySQL Installer

MySQL Server 8.0.28

Type and Networking

Authentication Method

Accounts and Roles


Windows Service

Apply Configuration

Authentication Method

Use Strong Password Encryption for Authentication (RECOMMENDED)

MySQL 8 supports a new authentication based on improved stronger SHA256-based password methods. It is recommended that all new MySQL Server installations use this method going forward.

 **Attention:** This new authentication plugin on the server side requires new versions of connectors and clients which add support for this new 8.0 default authentication (caching_sha2_password authentication).

Currently MySQL 8.0 Connectors and community drivers which use libmysqlclient 8.0 support this new method. If clients and applications cannot be updated to support this new authentication method, the MySQL 8.0 Server can be configured to use the legacy MySQL Authentication Method below.

Use Legacy Authentication Method (Retain MySQL 5.x Compatibility)

Using the old MySQL 5.x legacy authentication method should only be considered in the following cases:

- If applications cannot be updated to use MySQL 8 enabled Connectors and drivers.
- For cases where re-compilation of an existing application is not feasible.
- An updated, language specific connector or driver is not yet available.

Security Guidance: When possible, we highly recommend taking needed steps towards upgrading your applications, libraries, and database servers to the new stronger authentication. This new method will significantly improve your security.

< Back **Next >** Cancel

MySQL Installer

MySQL Server 8.0.28

Type and Networking

Authentication Method

Accounts and Roles

Windows Service

Apply Configuration

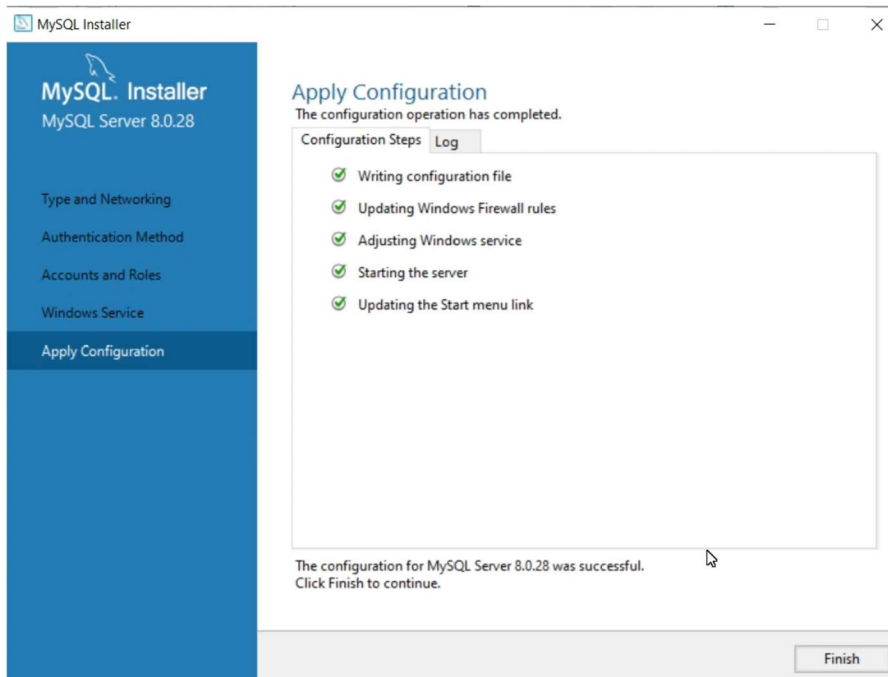
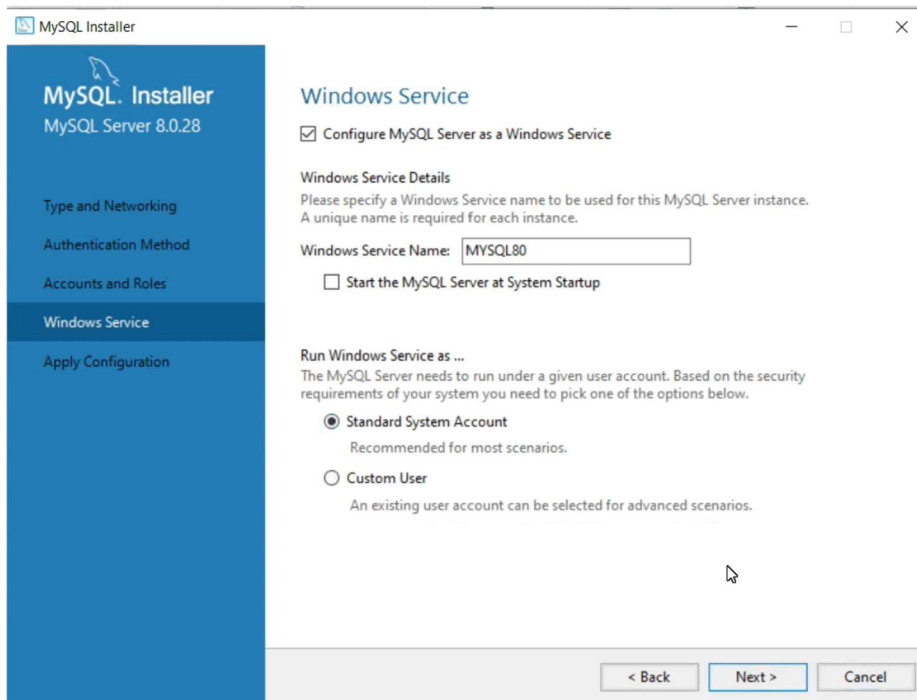
Accounts and Roles

Root Account Password

Enter the password for the root account. Please remember to store this password in a secure place.

Current Root Password: Check

< Back Next > Cancel




2- Installation de DBeaver

DBeaver est un outil d'administration de bases de données

Lien de téléchargement :

<https://dbeaver.io/download/>

https://dbeaver.io/download/

 **DBEaver Community**
Free Universal Database Tool

Star 25,171 Follow @dbeaver

search here ...

Home About **Download** Sources Documentation News Support Enterprise Edition CloudBeaver

Download

Community Edition 22.0

Released on March 7th, 2022 ([Milestones](#)).
It is free and open source ([license](#)).
Also you can get it from the [GitHub mirror](#).

Enterprise Edition 22.0

Released on March 14th, 2021
EE version web site: dbeaver.com
[Trial](#) version is available.

Windows

- Windows (installer)
- Windows (zip)
- Install from Microsoft Store
- Chocolatey (choco install dbeaver)

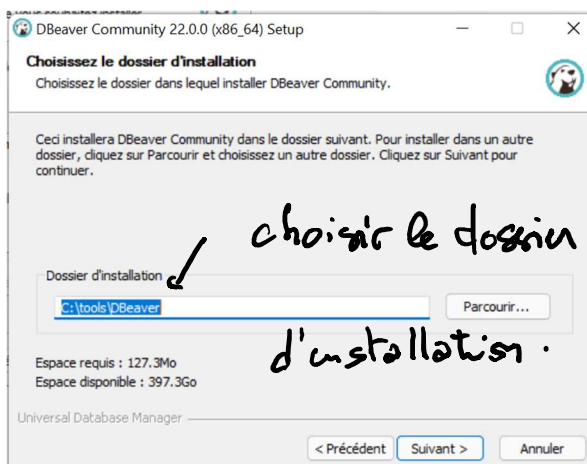
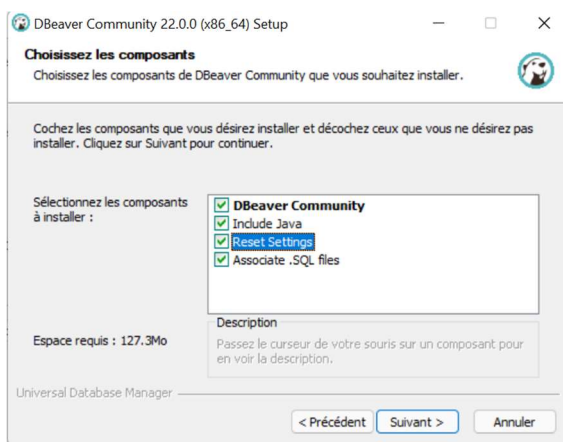
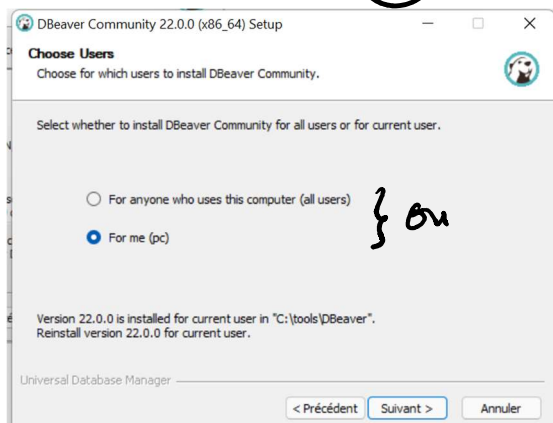
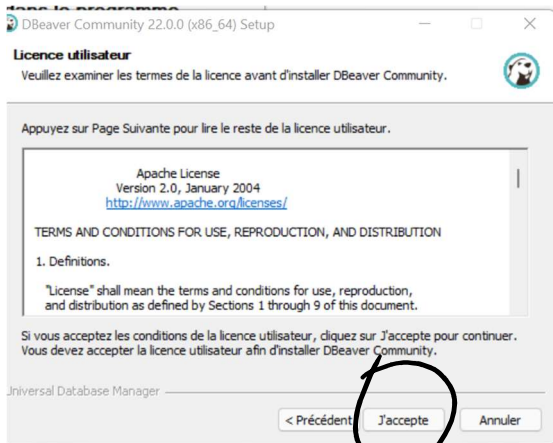
Mac OS X

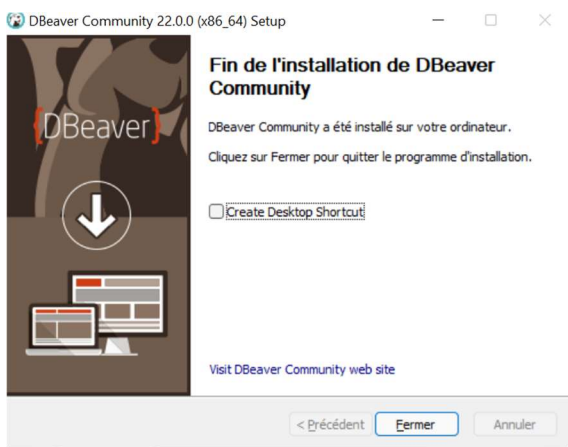
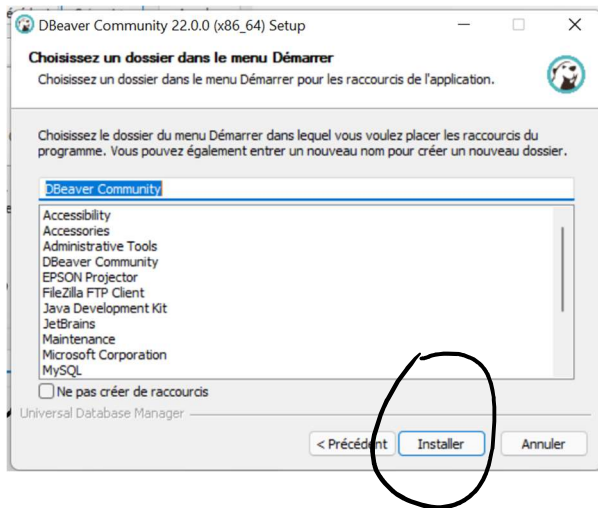
Enterprise Edition features:

- Support of NoSQL databases:
 - MongoDB
 - Cassandra
 - InfluxDB
 - Redis
 - Amazon DynamoDB
 - Amazon DocumentDB

Après téléchargement, lancez l'installation de Dbeaver





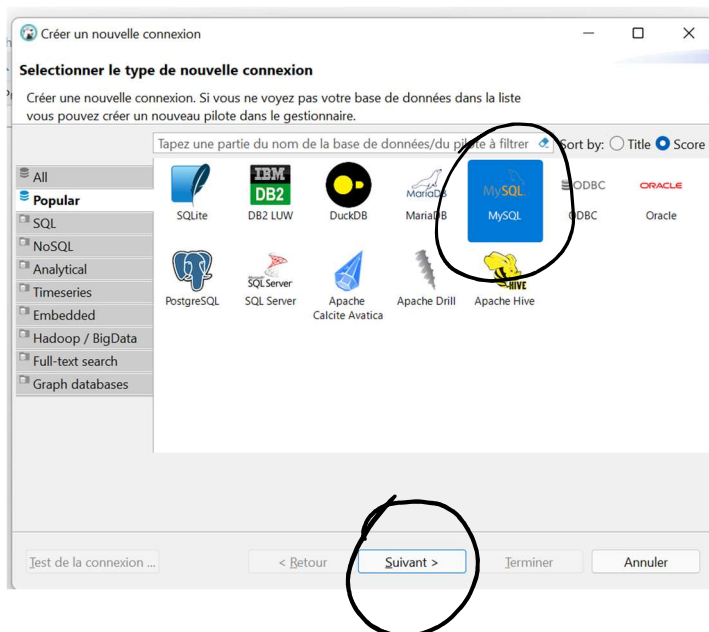


Après installation lancez DBeaver

Créer une nouvelle connexion au serveur Mysql

Dans le menu Bases de données cliquez sur « Nouvelle connexion »

Sélectionnez le type Mysql



Paramètres de connexion MySQL



MySQL paramètres de connexion

Général Propriétés du pilote SSH Proxy SSL

Server
Server Host: localhost Port: 3306
Database:

Authentification (Database Native)
Nom d'utilisateur : root
Mot de passe : Enregistrer localement les mots de passe

Advanced
Server Time Zone: Auto-detect
Local Client: MySQL Server 8.0

Vous pouvez utiliser des variables dans les paramètres de connexion. [Connection details \(name, type, ...\)](#)

Driver name: MySQL [Edit Driver Settings](#)

Test de la connexion ... < Retour Suivant > Terminer Annuler

sois le mot de passe d'id n'est pas vide.

cliquez sur →

Editer le pilote "MySQL"

Paramètres Bibliothèques Propriétés de pilote Paramètres avancés Client natif

mysql:mysql-connector-java:RELEASE [8.0.17]

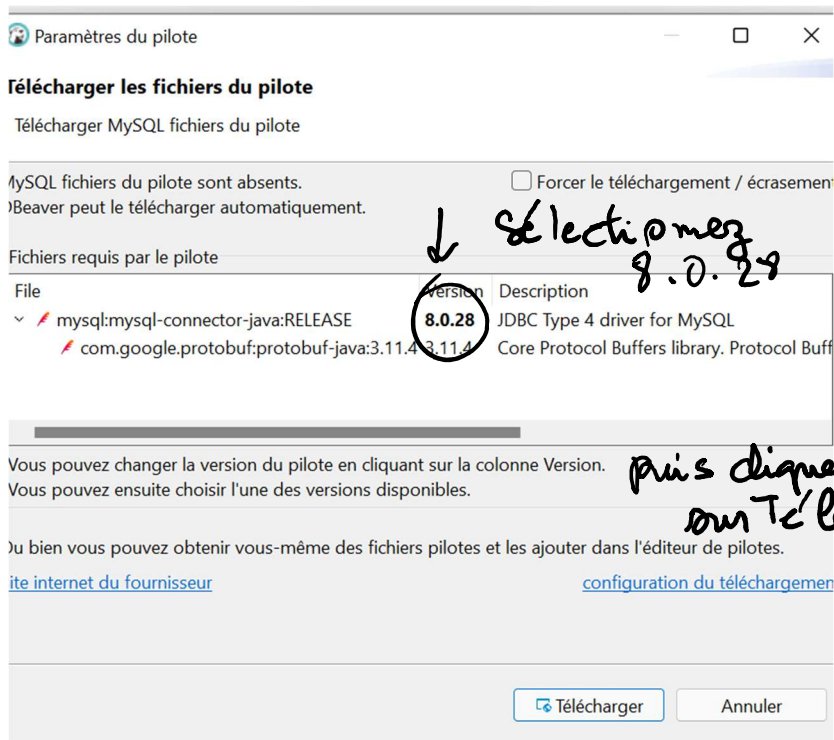
Ajouter un Fichier
Ajouter un répertoire
Ajouter un Artefact
Télécharger/Mettre à jour
Information
Supprimer
Chemin de la classe

Classe de pilote: Rechercher une classe

Restaurer les paramètres par défaut OK Annuler

dans l'onglet Bibliothèques

cliquez sur →



Puis cliquez sur « Terminer »

Si la connexion est réussie, elle sera affichée dans le navigateur de bases de données

